

## In This Issue:

- Online Employment Application
- Health Fair
- H1N1 Flu

## Contact Human Resources

Heather Waitman  
Director  
(845) 359-3400 x332  
hwaitman@stdominicshome.org

Beverly Warwick  
Assistant Director  
(845) 359-3400 x207  
bwarwick@stdominicshome.org

Fax:  
Blauvelt HR  
(845) 398-2067

Bronx HR  
Armina Bynaar  
(718)295-9112

Susan Smith  
(917)645-9100 x8104

## Online Employment Application

Applying for a position at Saint Dominic's Home is easy!  
Our Employment Application is available online.



### HOW TO APPLY

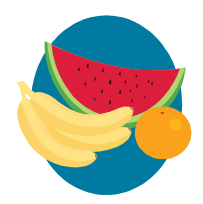
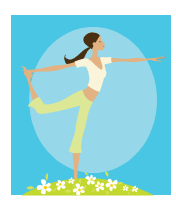
- Go to [www.stdominicshome.org](http://www.stdominicshome.org)
- Click on Employment
- Click on desired location
- Click on desired position

When referring anyone for employment, direct the person to go to our website and follow the steps outlined above. All of our open positions are posted online.

## Health Fair

**Tuesday, November 17, 2009**  
**3:00 p.m.—5:00 p.m.**  
St. Dominic's School Gym

All employees are invited to attend the health fair! Representatives from our health insurance carriers, Rockland County Dept. of Health and other entities will be onsite to provide information about health and wellness. We will also be providing health screenings and a wellness lecture.



## H1N1 Flu



H1N1 flu is an infection caused by the influenza A virus. It is a respiratory disease of pigs; however, human cases of H1N1 have been identified in the U.S. as well as internationally. The Centers for Disease Control and Prevention (CDC) has determined that H1N1 is contagious and is spreading from human to human.

### Steps to Prevent Transmission

- Cover your nose and mouth with a tissue when you cough or sneeze. Throw the tissue away after you use it.
- Wash your hands often with soap and water, especially after you cough or sneeze. Alcohol based hand sanitizers are also effective.
- Avoid touching your eyes, nose or mouth. Germs spread that way.
- Influenza is thought to spread mainly person to person through the coughing or sneezing of infected people.
- If you get sick with flu-like symptoms, the CDC recommends that you stay home from work or school, and limit contact with others to keep from infecting them.